

SOLAR BENEFITS

Continued agricultural use

Agriculture is a primary part of the local land use and our proposal is designed accommodate grazing around the rows of panels to maintain an agricultural co-use with renewable energy.

Beekeeping

Where possible we try to accommodate beekeeping on our projects. Working in partnership with local beekeepers, we identify an area suitable for bee hives and include pollinator friendly planting.

Green open spaces

The installation has been designed to leave wide spaces around the site boundaries and between the row of panels to avoid shading the panels. This will leave the majority of the fenced solar array area as uncovered grassland.

Footpaths, bridleways and byways

We're aware of the public rights of way network through and around our proposed site. Many of these are currently disused or largely inaccessible. When construction is complete, rights of way crossing the solar farm could be enhanced, and appropriate gates/styles installed to provide improved accessibility across the local rights of way network, to the benefit of the wider community and visitors.

Boosting biodiversity

A bespoke Biodiversity Management Plan will ensure that the existing and new habitats are enhanced or created to benefit local wildlife. As part of this initiative, our landscape planting, seeding and habitat creation plans will focus on native species. We are keen to hear from and work with any local land management organisations to support wildlife and boost the local habitats.



COMMUNITY ENGAGEMENT

Our online Q&A sessions will take place in Welsh on Tuesday 16th March, and in English on Wednesday 17th March, at 7pm. Please join either meeting at the stated time via the project webpage at www.lightsourcebp.com/uk/projects/mon-solar-farm

We want to ensure that our engagement is inclusive and are aware that not everyone within the community will have access to the internet. Therefore, if you would like to receive a call back from the team to discuss the project or know of someone who would, we would be pleased to arrange this at a convenient time.



WHO ARE WE?

Lightsource bp is a global leader in the development and management of solar energy projects, and a 50:50 joint venture with bp. Our purpose is to deliver affordable and sustainable solar power for businesses and communities around the world. Lightsource bp's largest contribution towards global sustainability is in creating safe and meaningful solar projects for our world, but through our sustainability framework, we plan to do so much more.



FIRST STAGE COMMUNITY INFORMATION PACK

PROPOSED SOLAR FARM ON LAND IN THE NORTH EAST OF THE ISLE OF ANGLESEY



Lightsource bp is working on a proposal for a solar farm on land in the north east of the Isle of Anglesey, and are presenting early-stage plans to the community. We will fund the development of the Môn Solar Farm, which will be connected into the local electricity network.

The project will have an output power capacity of up to 350MW, which is enough renewable energy to power 133,106 homes for a year. The solar energy produced creates a carbon emissions saving of 167,556 tonnes, equivalent to taking 35,650 fuel-burning cars off the roads.

We're in the very early stages of this project, and are sharing our plans with local residents and surrounding communities to gain their insight and feedback into the land we have identified. Following this early stage engagement, we'll refine our plans and conduct a range of assessments, before bringing the plans back to the community for further feedback.

Due to the current Covid-19 restrictions in the UK, we are seeking to ensure that our community engagement is undertaken safely. Safety is one of our core values, and in order to keep to the high standards of community engagement that we've set as a company we're replacing our community consultation event with online Q&A sessions.

Get involved! COMMUNITY INFORMATION EVENT

This is the very first stage of our community engagement activity and an opportunity for anyone interested to get in touch with us to discuss the proposals, ask any questions and help shape and inform the next stages of this project. We've set up a dedicated webpage for this project at www.lightsourcebp.com/uk/projects/mon-solar-farm, with further information and opportunities to get in touch with us to discuss our plans.

Our online Q&A sessions will take place in Welsh on Tuesday 16th March, and in English on Wednesday 17th March, at 7pm. Please join either meeting at the stated time via the project webpage above.

PROJECT TIMELINE



SITE SELECTION AND
EARLY COMMUNITY
ENGAGEMENT



PRELIMINARY
ASSESSMENT, SITE DESIGN
AND FURTHER COMMUNITY
ENGAGEMENT



ENVIRONMENTAL
ASSESSMENT AND
STATUTORY PRE SUBMISSION
CONSULTATION



PLANNING APPLICATION,
CONSULTATION AND
PUBLICITY



EXAMINATION STAGE



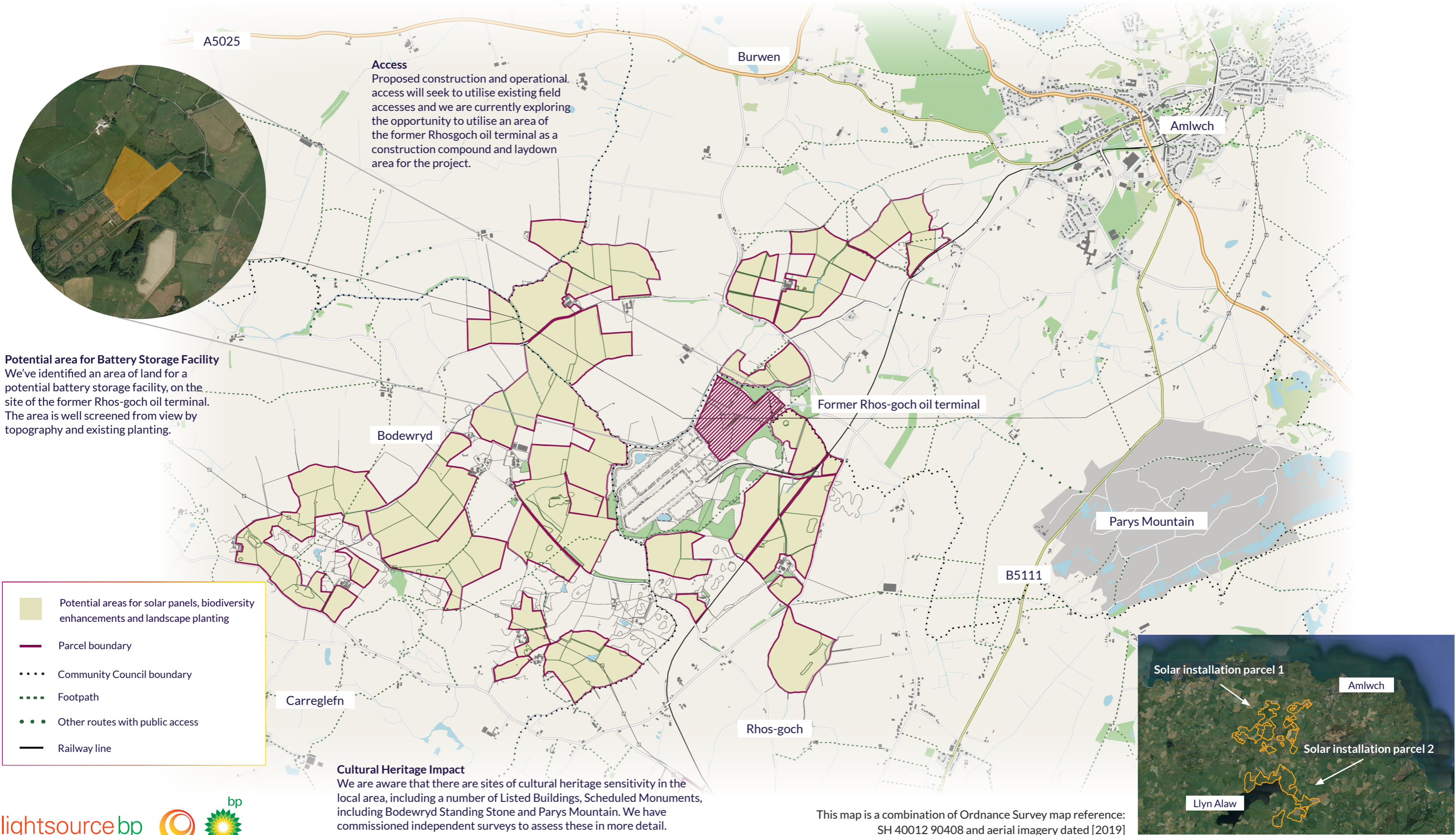
DECISION ISSUED

OUR INITIAL THOUGHTS

Proposed solar farm on land around Rhosgoch, Isle of Anglesey (Parcel 1)

The land we've identified for this project is split into three parcels, each of which is yet to be finalised. We're still in the early stages, and our plans will evolve based on local input and the results of our ecological, landscape and heritage assessments as well as other considerations. These are our current thoughts for parcel one, which is focussed around the former Rhosgoch Oil Terminal. For further details, please visit www.lightsourcebp.com/uk/projects/mon-solar-farm or join our online Q&A sessions, in Welsh on Tuesday 16th March, and in English on Wednesday 17th March, at 7pm.

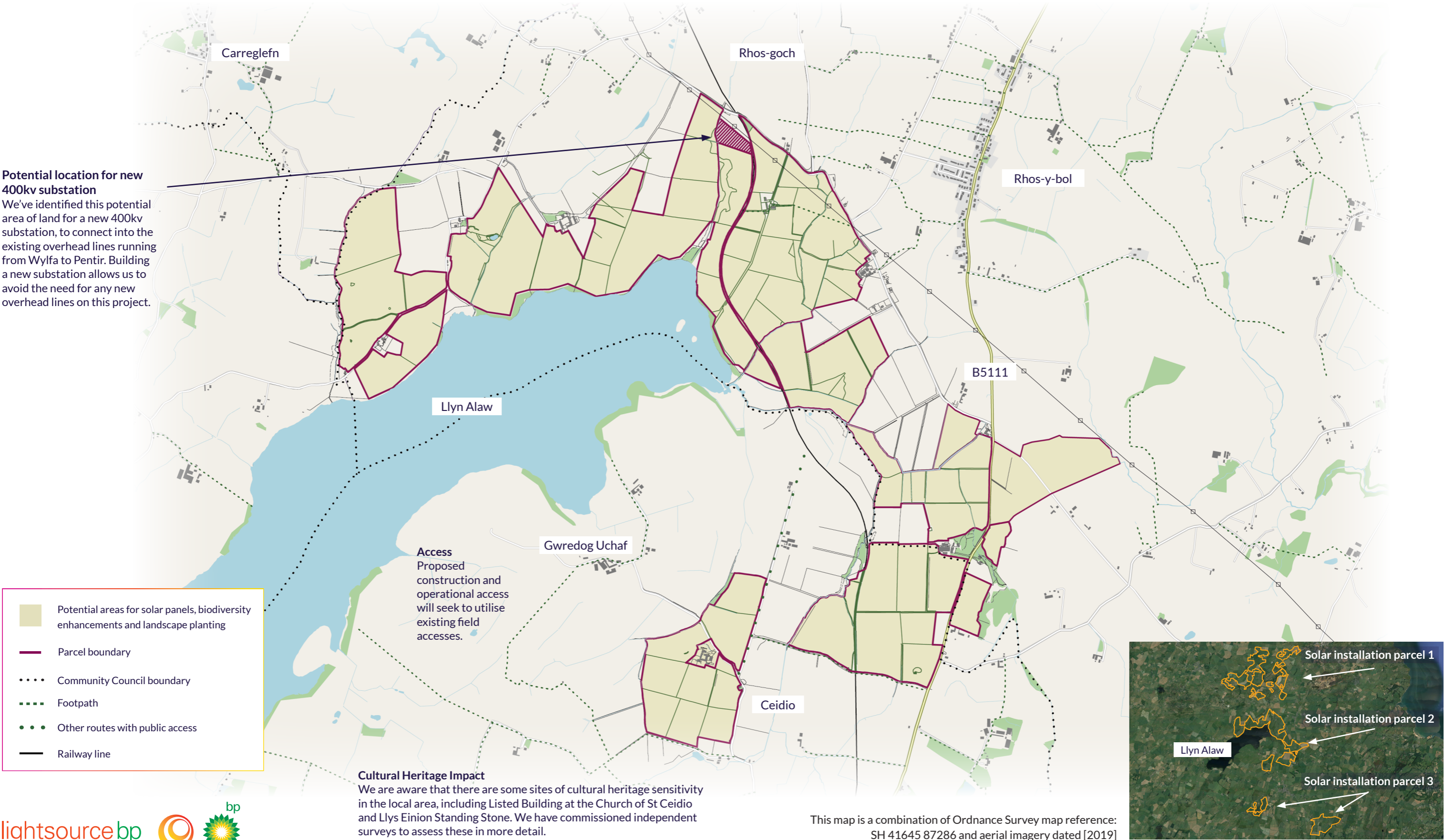
Why solar, why Anglesey?
Solar is a passive form of technology, generating electricity without creating any waste products or pollutants. This makes it an ideal energy source for Wales, as we work towards the government's 2030 target to acquire 70% of its energy from renewable sources. The Anglesey Energy Island Programme, established by Isle of Anglesey County Council seeks to put Anglesey at the forefront of low carbon energy.



OUR INITIAL THOUGHTS

Proposed solar farm on land adjacent to Llyn Alaw Reservoir (Parcel 2)

The land we've identified for this project is split into three distinct parcels, each of which is yet to be finalised. We're still in the early stages, and our plans will evolve based on local input and the results of our ecological, landscape and heritage assessments. These are our current thoughts for parcel two, which is focussed to the north and east of Llyn Alaw Reservoir. For further details, please visit www.lightsourcebp.com/uk/projects/mon-solar-farm or join our online Q&A sessions, in Welsh on Tuesday 16th March, and in English on Wednesday 17th March, at 7pm.



OUR INITIAL THOUGHTS

Proposed solar farm south east and south west of Llanerchymedd (Parcel 3)

The land we've identified for this project is split into three distinct parcels, each of which is yet to be finalised. We're still in the early stages, and our plans will evolve based on local input and the results of our ecological, landscape and heritage assessments. These are our current thoughts for parcel three, which is located south east and south west of Llanerchymedd. For further details, please visit www.lightsourcebp.com/uk/projects/mon-solar-farm or join our online Q&A sessions, in Welsh on Tuesday 16th March, and in English on Wednesday 17th March, at 7pm.

